

APPLICATIONS

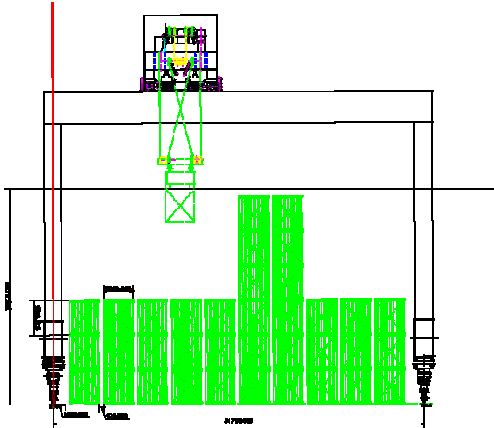
ALL FROM ONE HAND



FEAL
Industrial Solutions

Laser measuring system PDS STS

Position collection of Trailer, AGV and Containers



Short description:

Intended for use where the RTG system requires a noiseless „gentle“ container handling. This application is a special one for where the port is in close proximity to populated areas. In order to ensure gentle container handling possible a measuring technique is needed which ignores the positions of the partners - Spreader to container, containers to truck, or containers to container. For this a laser scanner measuring technique is ideal.

Measurement System Features:

- Target area measurement
- Relative Situation Measurement (Spreader/Marks) Spreader) and the target object (Truck, container) to be measured is known.
- Marks Measurement
- Collision protection during initial positioning

With two laser scanners installed on the cart of the RTG, whose scan even and centrally cuts the area to the cart in both the y axis (trolley driven) and in the Z-axis (stroke), the relative position of the load (and/or

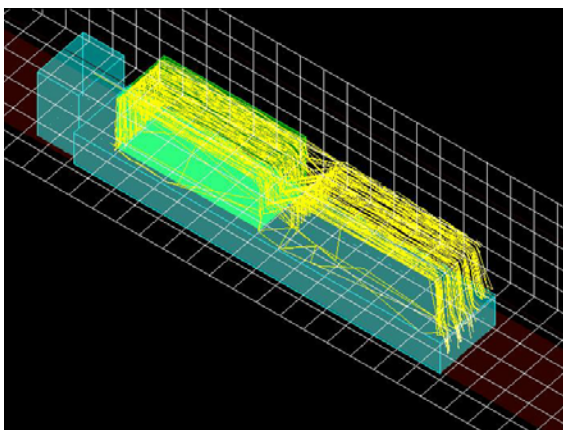
Spreader) and the target object (Truck, container) to be measured is known. With this relative data for automation it is possible to steer the travel of the load into an approximation range such that it produces the smallest possible noise pollution.

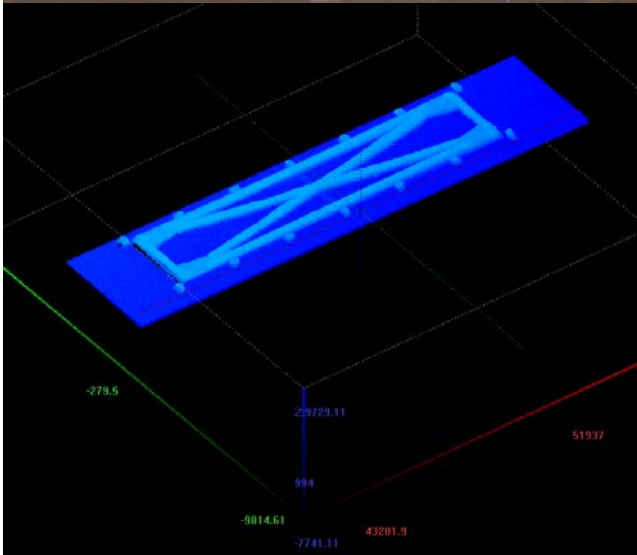
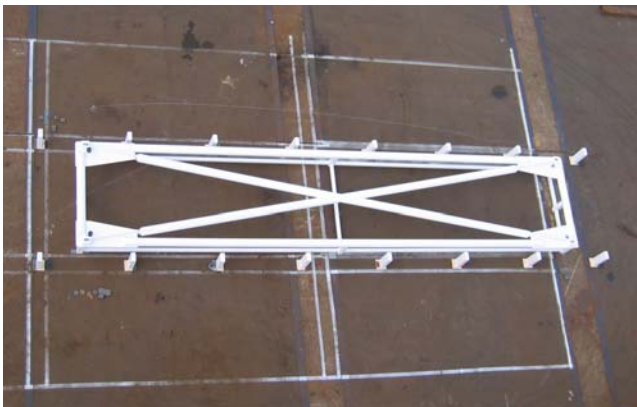


"APL Agate" (C) Boris Paulien

Team Shiploves.de

One Laser Scanner and one swiveling platform form a 3D-Unit. Two of these 3D-Units sit to both sides of the cart and form the laser system. For the individual tasks (see above), the laser scanner is swivelled in the directions necessary for the measuring task. The scanner optics turns around 360°, it over a range from 90° the laser beams is sent and received. The scanner optics turns at 10Hz. The laser beams are transmitted in 0,125° steps. The Scan runs in the crane travel direction The elevator level is accomodated by the servo-drive around the crane travel axis.





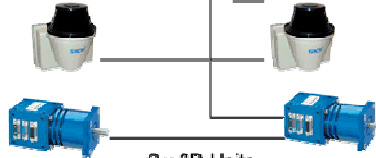
PLC

Profibus-DP

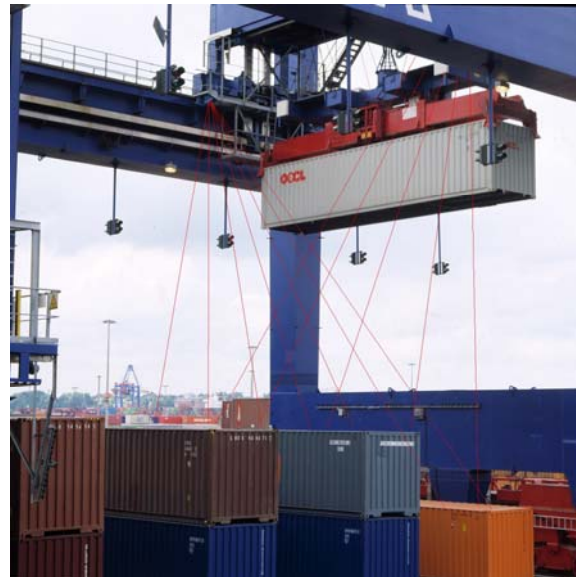
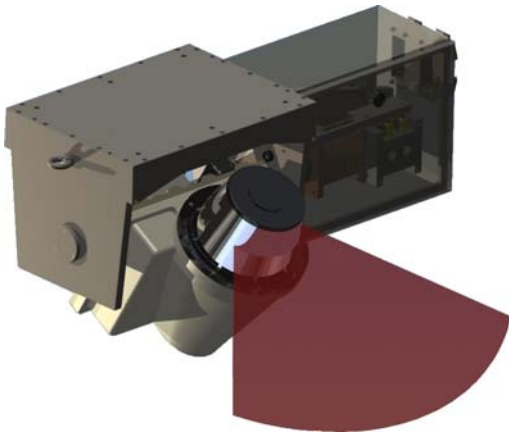


Siemens Rack PC 840

1 x Ethernet
1 x CAN-Bus



2 x 3D-Units
(Servoantrieb + Long
Range Laserscanner)



FEAL
Industrial Solutions

**YOUR APPLICATION OF TODAY WITH
OUR TECHNOLOGY OF TOMORROW**

CONTACT

