

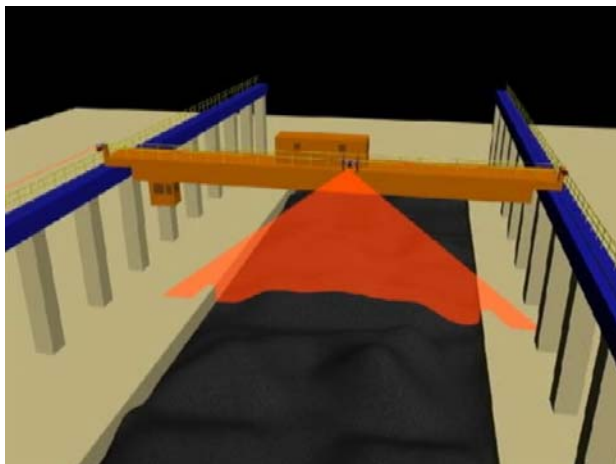
APPLICATIONS

ALL FROM ONE HAND



FEAL
Industrial Solutions

Bunker level measurement BFM volumetric



Short description:

Using the 2D+-Laser measuring system a 2D laser scanner is installed on an moveable crane bridge. This one is „looking“ from above onto the bunker plant and is scanning the bulk material profile at the respective crane bridge position. With the 2D+ Laser measuring system it is possible to record the bulk material profile along of any crane runways. With the position measurement system of the crane bridge the measurement systems receives the information about the position of the bulk material profile scan from the 2D Laser scanner within the bunker. By composing many 2D scans a precise 3D image is created. During the initial operation a so called „0-Profile“ is generated. With the later operation the current 3D image of the bunker will be cleared. Out of the obtained data the LASE CEWS application software can calculate precisely the volume.

Measurement System Features:

- Exact volume measurement
- Continuous inventory
- Planning base
- Simple installation
- Low investment costs
- Quality covering and –improvement
- Process optimisation
- Documentation
- Basis for process automation

LASE CEWS Application BFM:

The BFM Software can be handled easy and intuitive. Dialog management and assistent allow a simple initial operation.

The BFM Software evaluates the scanner raw data using special filter. The complete bunker area is divided into fields similar to a chessboard. The process controlling system is able to receive the current filling level of each field. With this information the process controlling system is able to control automatically the feeding and the removal flow as well as the possible regroupment strategies. Important status messages are clearly displayed and logged. For the integration into production lines all standard interfaces are available.

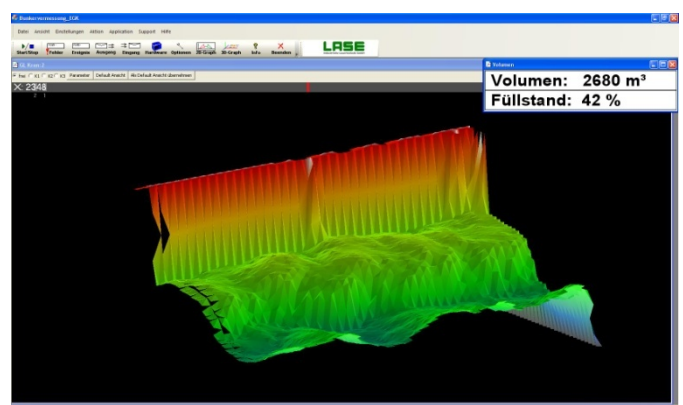
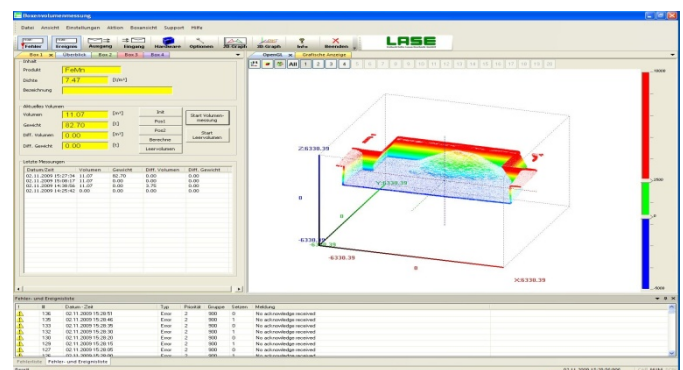


Image: LASE CEWS Application BFM